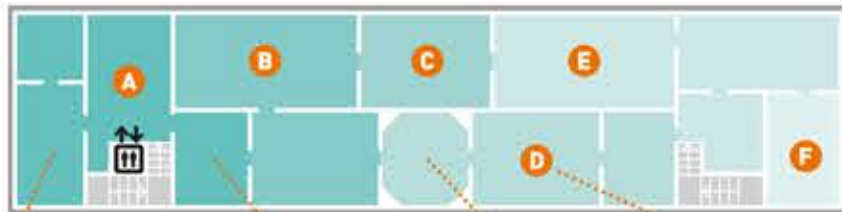


6TH FLOOR



Richard Bergh, *Nordic Summer Evening*



Peder Severin Krøyer, *Hip, Hip, Hurrah! Artists' Party, Skagen*



Pablo Picasso, *The Acrobat Family*



Vincent Van Gogh, *Olive Grove, Saint-Rémy*

A THE FÜRSTENBERG GALLERY
The collection of Pontus and Göthilda Fürstenberg was Sweden's most important collection of contemporary art at the turn of the century 1900. It includes works by the most influential artists of the period such as Anders Zorn, Carl Larsson and Per Hasselberg.

B NORDIC TURN OF THE CENTURY
Towards the end of the 19th century, Gothenburg was the leading city for art in Sweden. Here, the Artist's Union was formed by artists who opposed the Academy in Stockholm. The artists in the Opponents' movement are well represented in the museum's collection, such as Ernst Josephson and Bruno Liljefors. This section also includes art by the internationally acclaimed Edvard Munch.

C SWEDISH MODERNISM
During the beginning of the 1900s, naïve forms of expression become prominent in Swedish art. Here, one can see paintings by Olle Olsson Hagalund, Bror Hjorth and Sven Erixson. This period also produced several outstanding women artists, among them Vera Nilsson and Siri Derkert.

D THE FRENCH COLLECTION – IMPRESSIONISM/MODERNISM
The focus of the French collection is on impressionism and early modernism. Here one can see paintings by artists such as Degas, Cézanne, Monet, Gauguin and van Gogh. This section also includes works by modernist pioneers including Rodin, Henri Rousseau, Chagall and Léger.

E THE GOTHENBURG COLOURISTS
During the 1930s, the lyrical use of colour in Gothenburg art became the starting point of a tradition that left its mark on the art life of the city for the major part of the 20th century. The Gothenburg colourists share an intense, sensuous use of colour. The most recognized artists are Ragnar Sandberg, Inge Schiöler, Ivan Ivarsson and Åke Göransson.

F THE AROSENIUS ROOM
Ivar Arosenius had a short, but rich and intense artistic career. He is most appreciated for his drawings, with subject matter from idiomatic fairy-tale worlds. Here are some of his most loved works, as well as works by other artists from the bohemian clique in Gothenburg in the first years after the turn of century 1900.

G THE SERGEL GALLERY
The Sergel Gallery shows sculptures by Sweden's foremost 18th century sculptor, Johan Tobias Sergel. Trained in the French rococo style, he moved towards classicist ideals during the reign of Gustav III, albeit without completely abandoning the light touch of rococo.

H NORDIC ART 1750–1880
The fine collection of art from the Danish Golden Age during the first half of the 19th century includes artists such as Eckersberg, Rørbye and Købke. Here one also finds romantic landscapes by Marcus Larson, among others, as well as genre paintings by Höckert and Amalia Lindegren.

I OLD MASTERS 1450–1750
The collection of older European art from the 15th to the 17th century is dominated by religious subject matter. For instance, see Lucas Cranach the Younger's magnificent *Salome* and one of Rembrandt's finest painting, *The Knight with the Falcon*, along with works by Rubens and Teniers.

J THE SCULPTURE HALL
Here, contemporary works by Cajsa von Zeipel and Klara Kristalova appear side by side with modernist classics by artists such as Marino Marini, Alexander Calder and Louise Nevelson. The selection offers a broad range of sculptural expressions and presents a diversity of artistic practices and materials.

K THE ETAGES
Temporary exhibitions.

L THE STUDIO
Creative workshop.

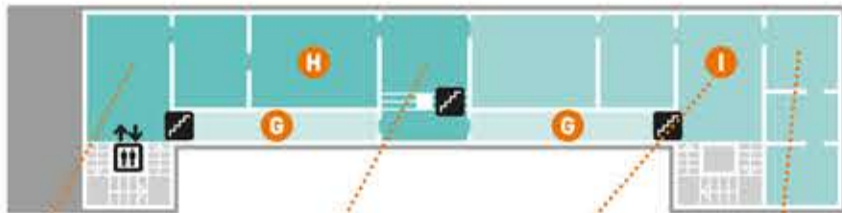
M THE STENA GALLERY
Temporary exhibitions.

N HASSELBLAD FOUNDATION

O AUDITORIUM

P GÖTEBORGS KONSTHALL

5TH FLOOR



Gustaf Cederström, *The Body of Charles XII of Sweden Being Carried Home from Norway*



Sofi Ribbing, *Boys Drawing*

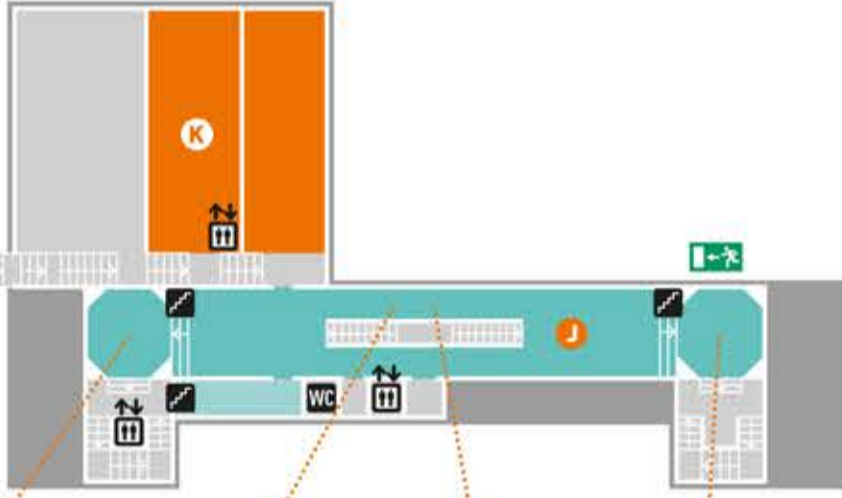


Peter Paul Rubens, *The Adoration of the Magi*



Lucas Cranach the Younger, *Salome*

3RD FLOOR



Charlotte Gyllenhammar, *Double Blind*



Marino Marini, *Rider*

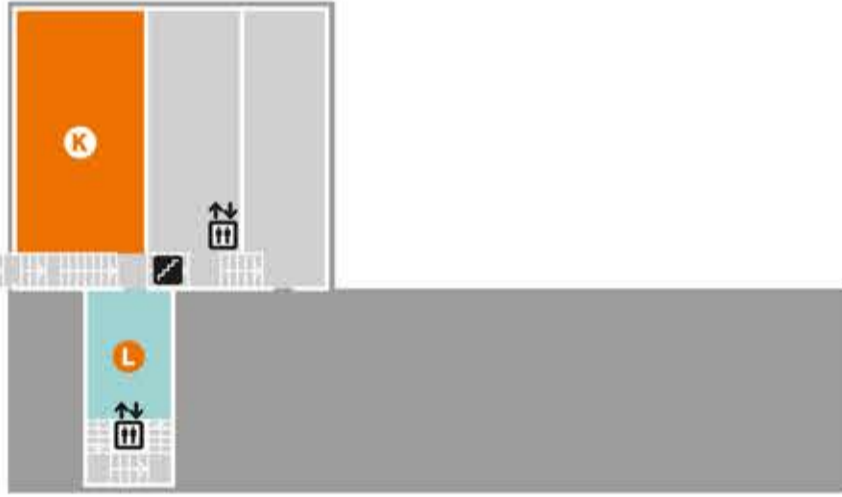


Louise Nevelson, *Totem I*

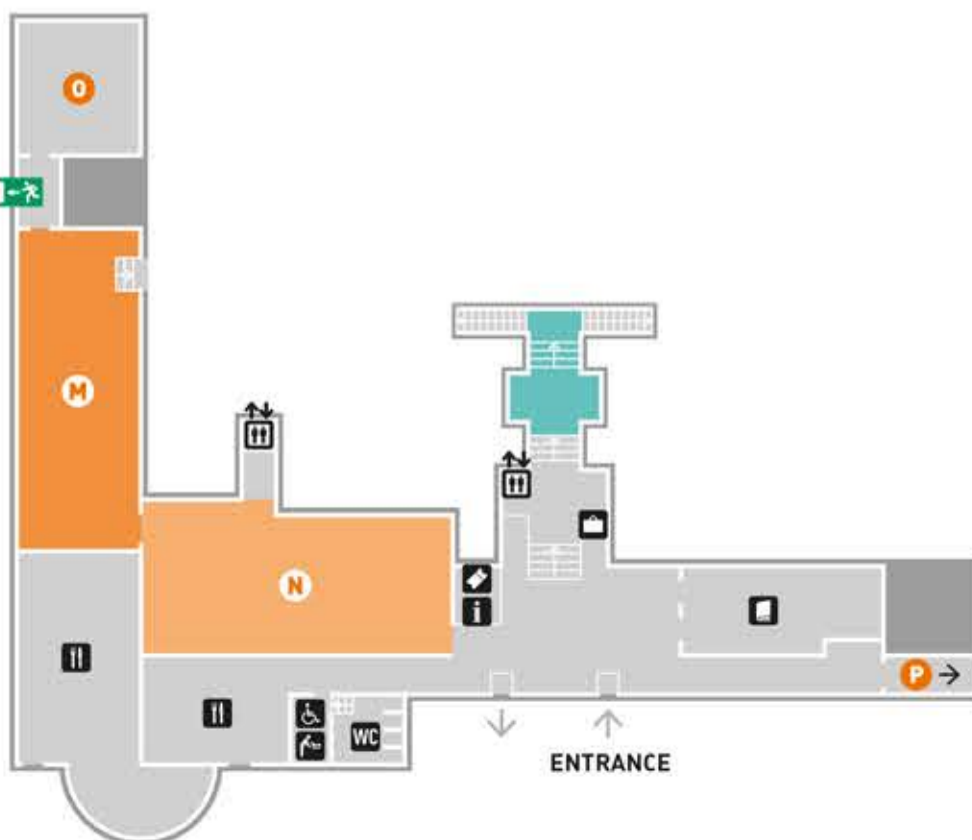


Ingrid Eriksson, *All Against All*

2ND FLOOR



ENTRANCE FLOOR



- Lift
- Information
- Tickets
- Toilets
- Disabled toilet
- Toilet with changing table
- Stairs - not accessible to wheelchairs or prams
- Storage
- Museum store
- Restaurant